

# PrimeResi

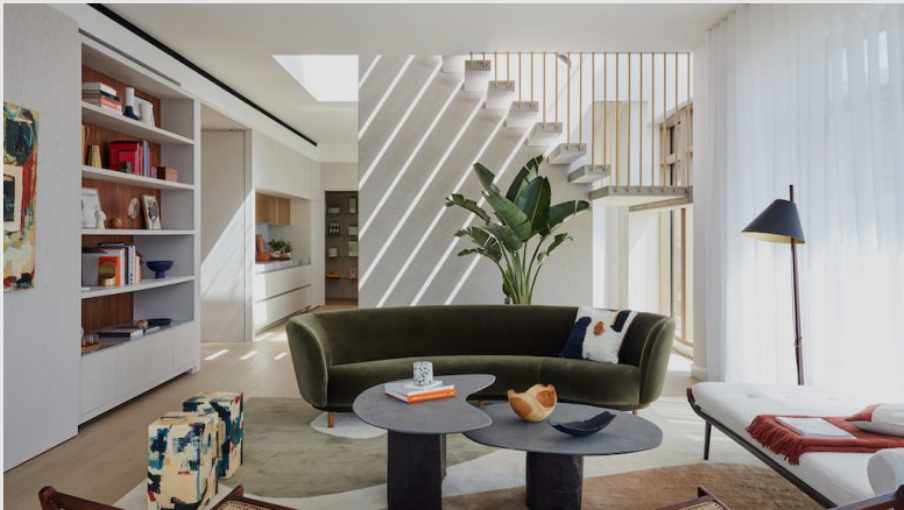
JOURNAL OF LUXURY PROPERTY

ALL PROPERTIES DEVELOPMENTS HERITAGE CASE STUDIES **DEALS & INSTRUCTIONS**

News · 8th Jun 2021

## In Pictures: Conran and Partners-designed penthouse unveiled in King's Cross

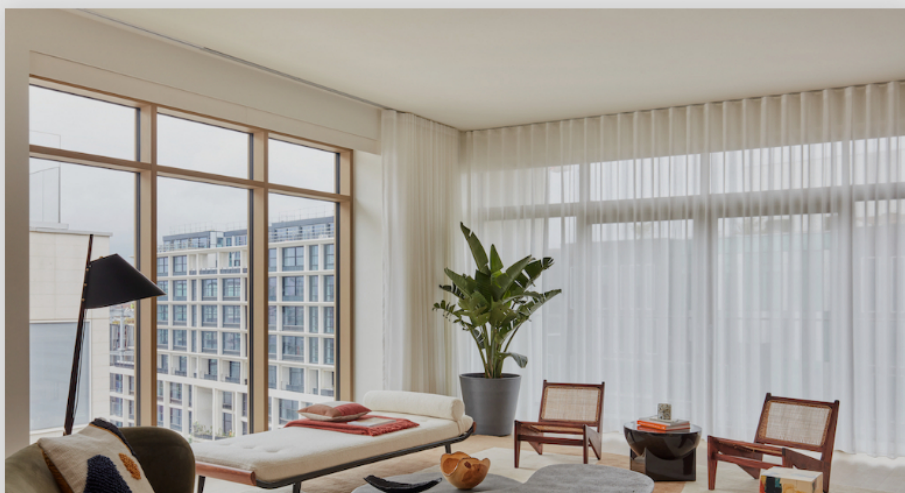
Marquee tenth-floor residence with chunky roof terrace is the only apartment left to buy at Argent's recently-launched LUMA scheme.



The marquee penthouse at the top of the LUMA building in King's Cross has been unveiled as the scheme closes in on sell-out status.

Designed by architects Squire & Partners, the penultimate chunk of Argent's overhaul of 67 acres around King's Cross in London [officially opened in April](#). The 61-unit resi project looks to have struck a chord with buyers, as the tenth-floor residence is the only one left to buy.

The interior – as with all of the apartments – has been designed by Conran and Partners, and is described as “an ode to the rich cultural history of the area”.



Share this article:



Add to Favourites

Save to PDF

In this article:

### LOCATIONS

King's Cross  
London

### COMPANIES



Conran and Partners



Squire & Partners

### DEALS & INSTRUCTIONS

Properties

## Trending

MOST READ EDITOR'S CHOICE LATEST

01

Interview: Charlie Walsh on launching a landmark super-prime scheme in Central London

PrimeResi meets the head of resi sales at The OWO, the...

Business & People · 7th Jun 2021

02

Europe's first Raffles-branded residences go on sale in London

IN PICTURES: Inside one of the most anticipated new...

Properties · 7th Jun 2021





Measuring over 2,200 sq ft, the four-bed lateral comes with a 550 sq ft private roof terrace with planting by Botanical Boys and views over neighbouring Coal Drops Yard, and the London skyline.



A floating limestone staircase takes centre stage in the main entertainment space, leading up to the roof terrace and deftly dividing the living room and kitchen/dining area.

The design team has gone for organic, earthy tones, with statement pieces including a curved green velvet sofa, Pierre Jeanneret Kangaroo lounge chairs, a Benoit Viaene coffee table, a Christopher Farr rug and a Cordemeijer Cleopatra daybed.



03

### Haringtons recruits London specialist from Knight Frank as Empson moves on

Saul Empson has left Haringtons UK after more than 15...

Business & People · 9th Jun 2021

04

### Longstanding super-prime instruction in Notting Hill goes to sealed bids

Originally launched in 2018 as the biggest – and most...

Properties · 9th Jun 2021

05

### Fenton Whelan gears up for Park Modern launch as pre-sales hit £100m

The developer is planning to unveil its super-prime...

Properties · 7th Jun 2021



### MARKET DASHBOARDS







There's also an eight-seater Van Russum oak dining table, a drinks trolley from Stellaworks, and a pantry that's been pre-stocked with local artisan products. The study has a leather-topped Carl Hansen desk with a walnut Cassina chair.

Other on-trend touches include a series of "hidden" sliding doors, allowing for areas to be screened off for privacy as needed.



The price on an unfurnished basis is £4.175m.

Simon Kincaid, Partner, Conran and Partners: "Our design for LUMA is centred around creating a sense of calmness and tranquility, bringing a peaceful quality to the building which is noticeable as soon as you step inside. Once you leave the hustle and bustle of the city behind, you are immediately struck by the relaxed warmth and serenity that greets you. The design for The Penthouse is entirely bespoke, with every item intentionally sourced and curated especially for this particular property."

Robert Evans, CEO, King's Cross: "As the final home remaining at boutique residence LUMA, the penthouse is an outstanding space that optimises the green spaces set on either side and the central theme of 'light'. We are thrilled to have worked with Conran and Partners on the interiors to create a home designed for modern, lateral living in the heart of King's Cross. The design is deliberately understated and natural and the quality of its design is perfect for those seeking a seamless, urban lifestyle."

**IN PICTURES: THE PENTHOUSE, LUMA, KING'S CROSS** [£4.175m](#)

